

# West Ridge

## Triple Wide Series

McMinnville, Oregon

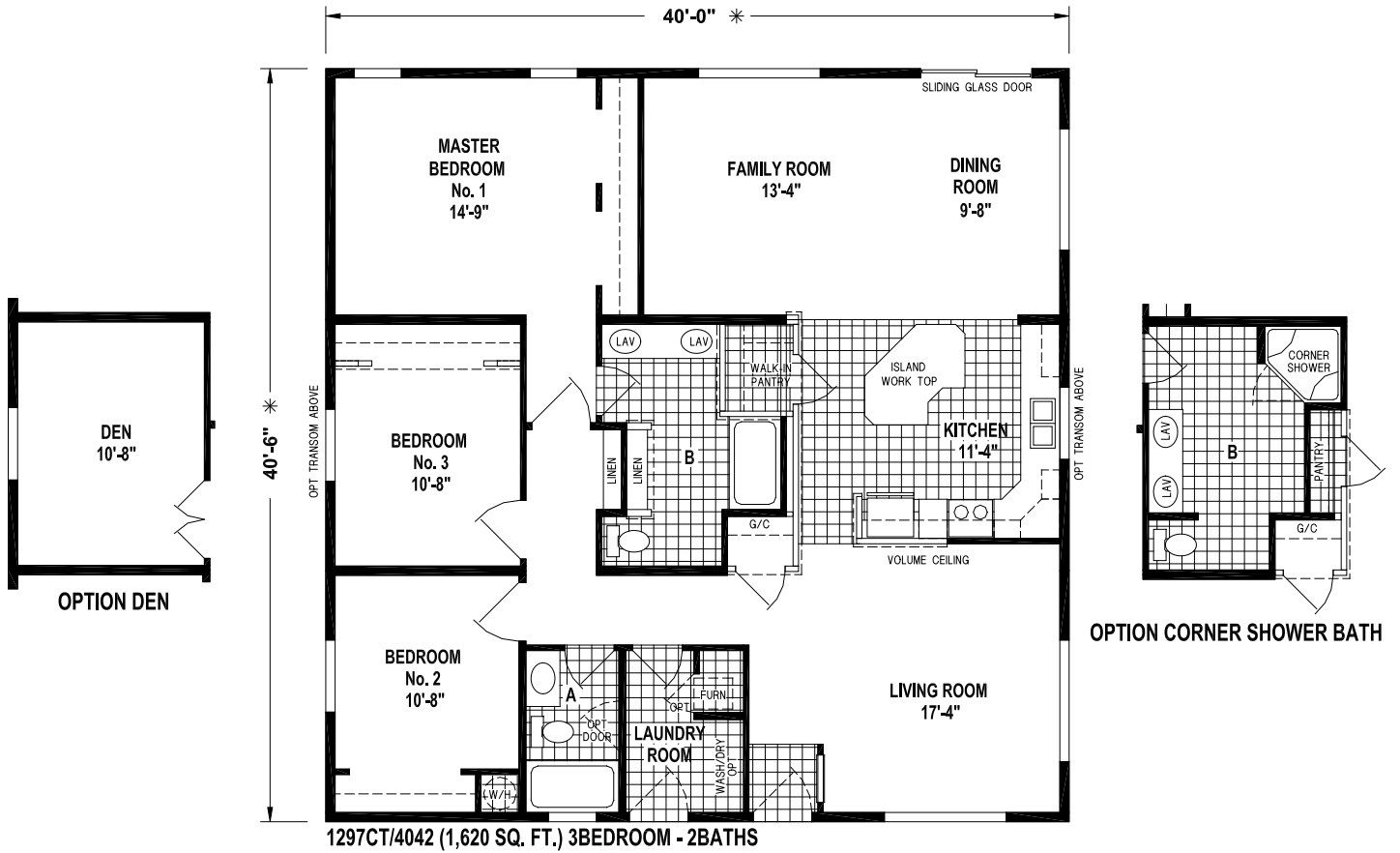


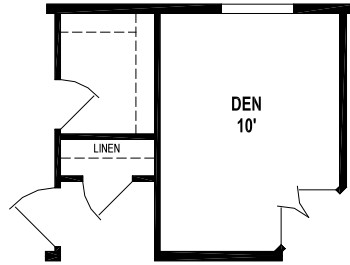
Some Items Shown May Be Optional

Your Local **West Ridge** Dealer is:

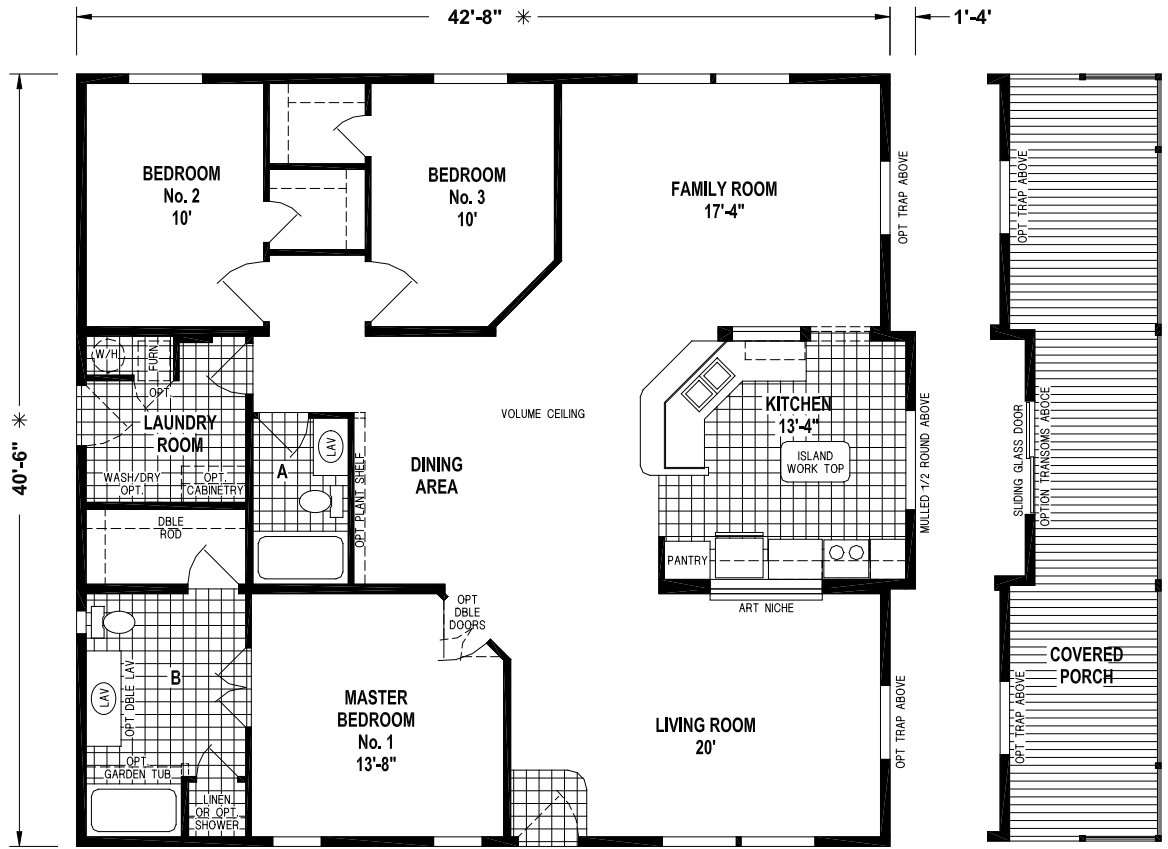


**SKYLINE**<sup>®</sup>  
BRINGING AMERICA HOME. BRINGING AMERICA FUN.

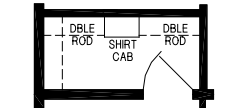




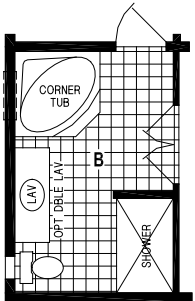
OPTION DEN



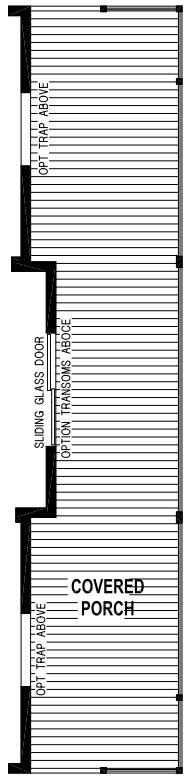
1235CT/42'8"-44-42'8"42 (1,745 SQ. FT.) 3BEDROOM - 2BATHS



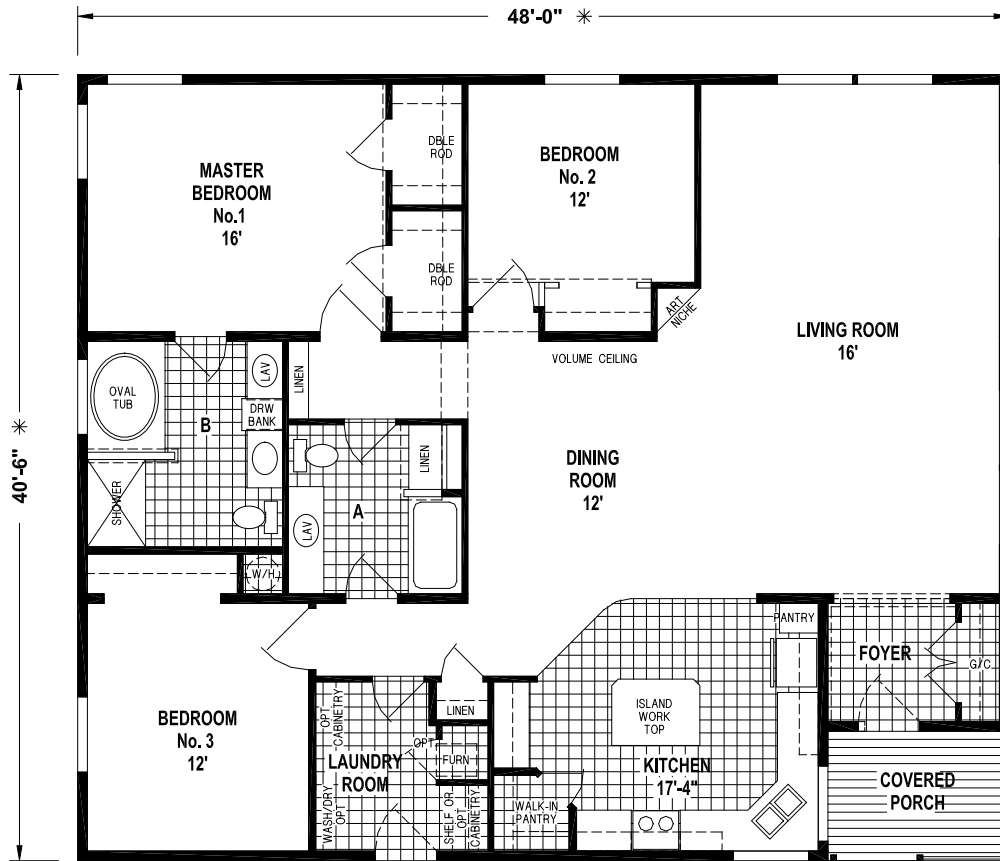
OPTION MASTER CLOSET



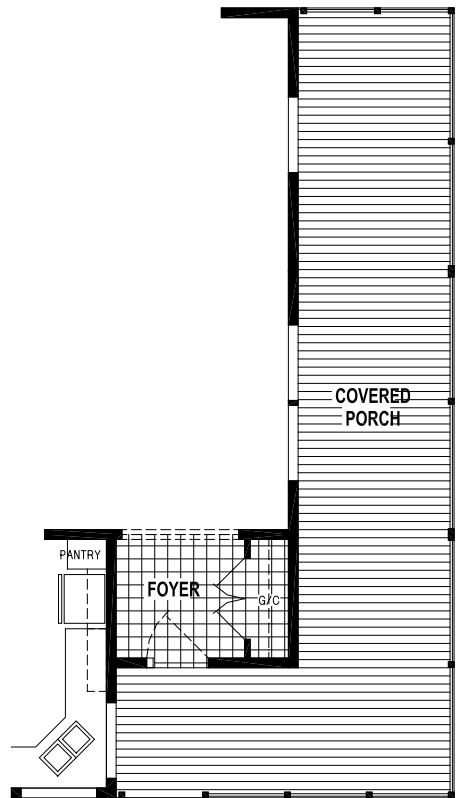
OPTION CORNER TUB BATH



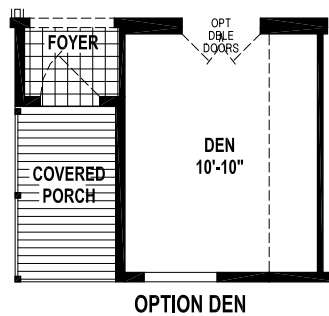
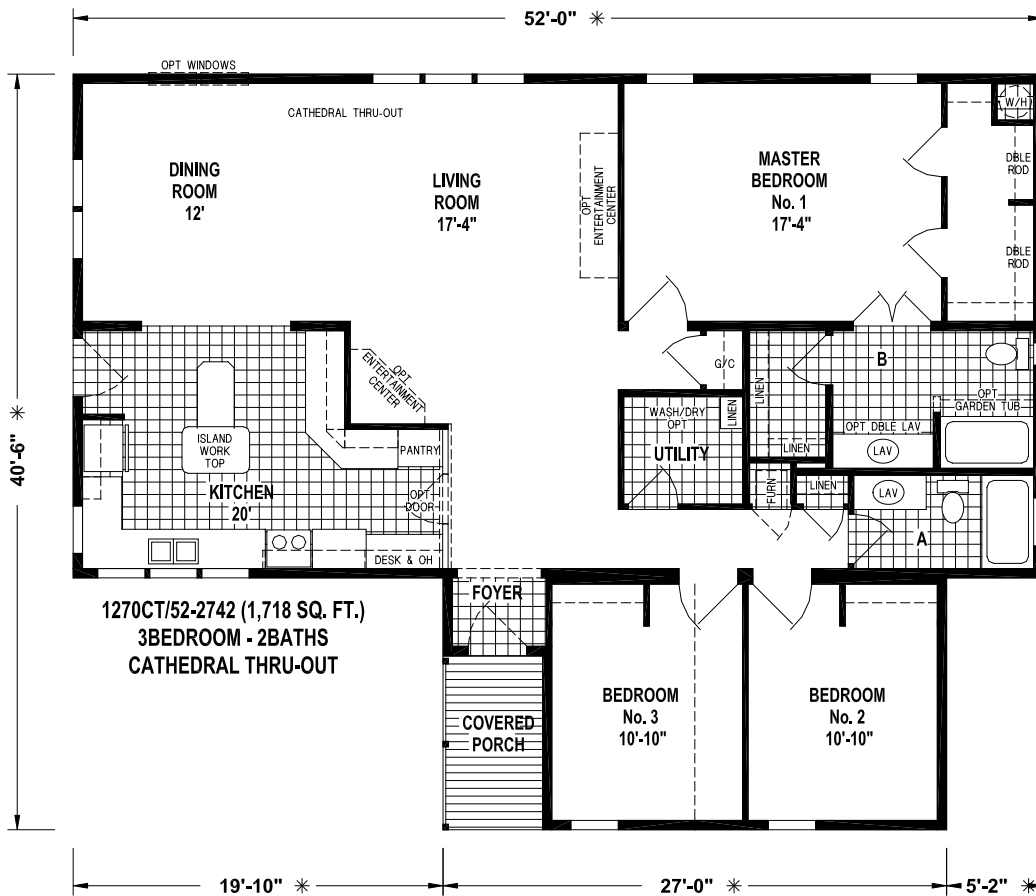
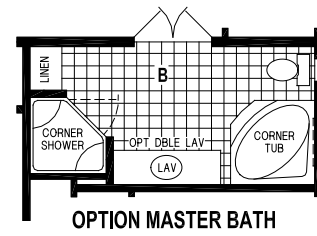
OPTION COVERED PORCH

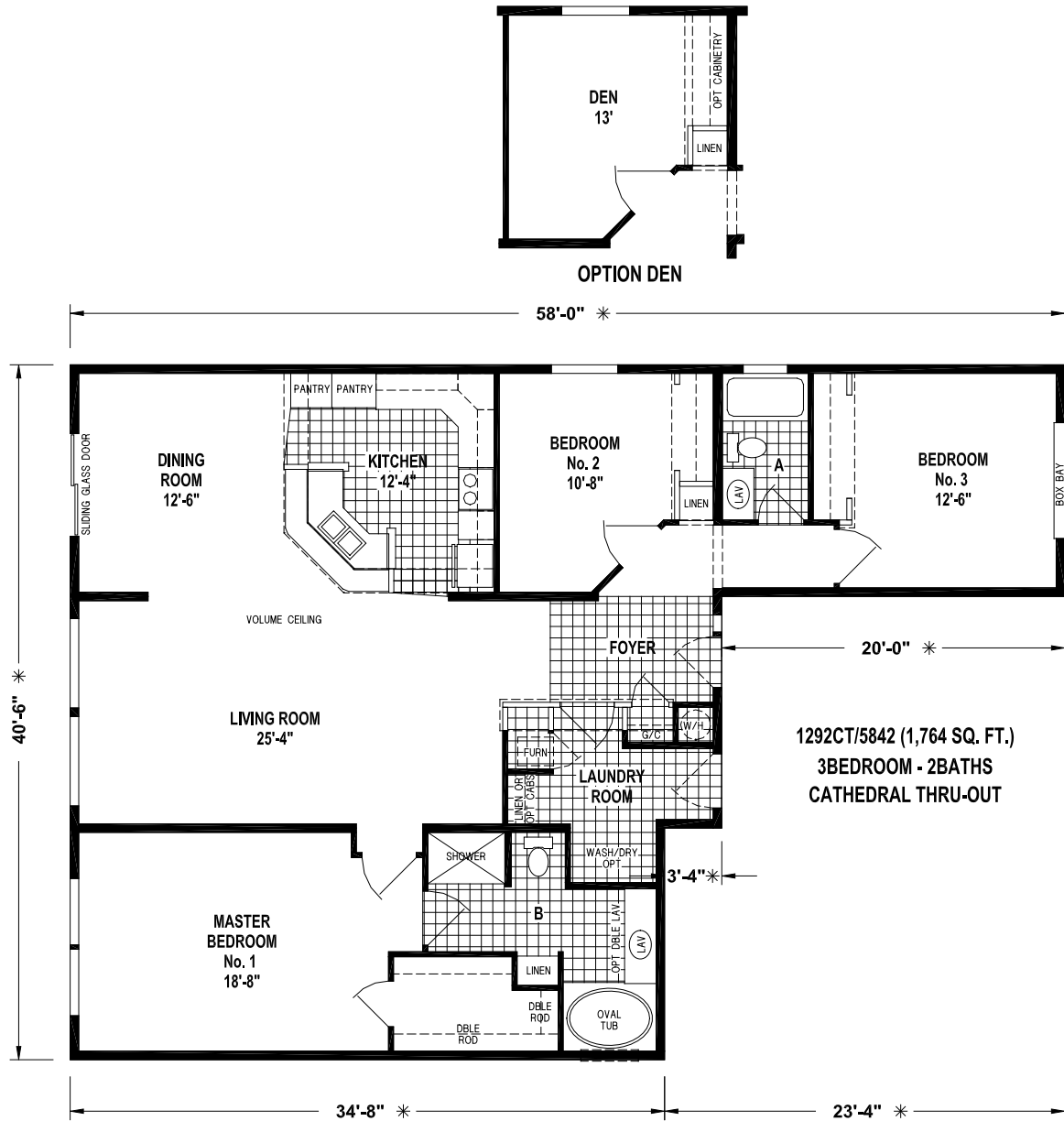


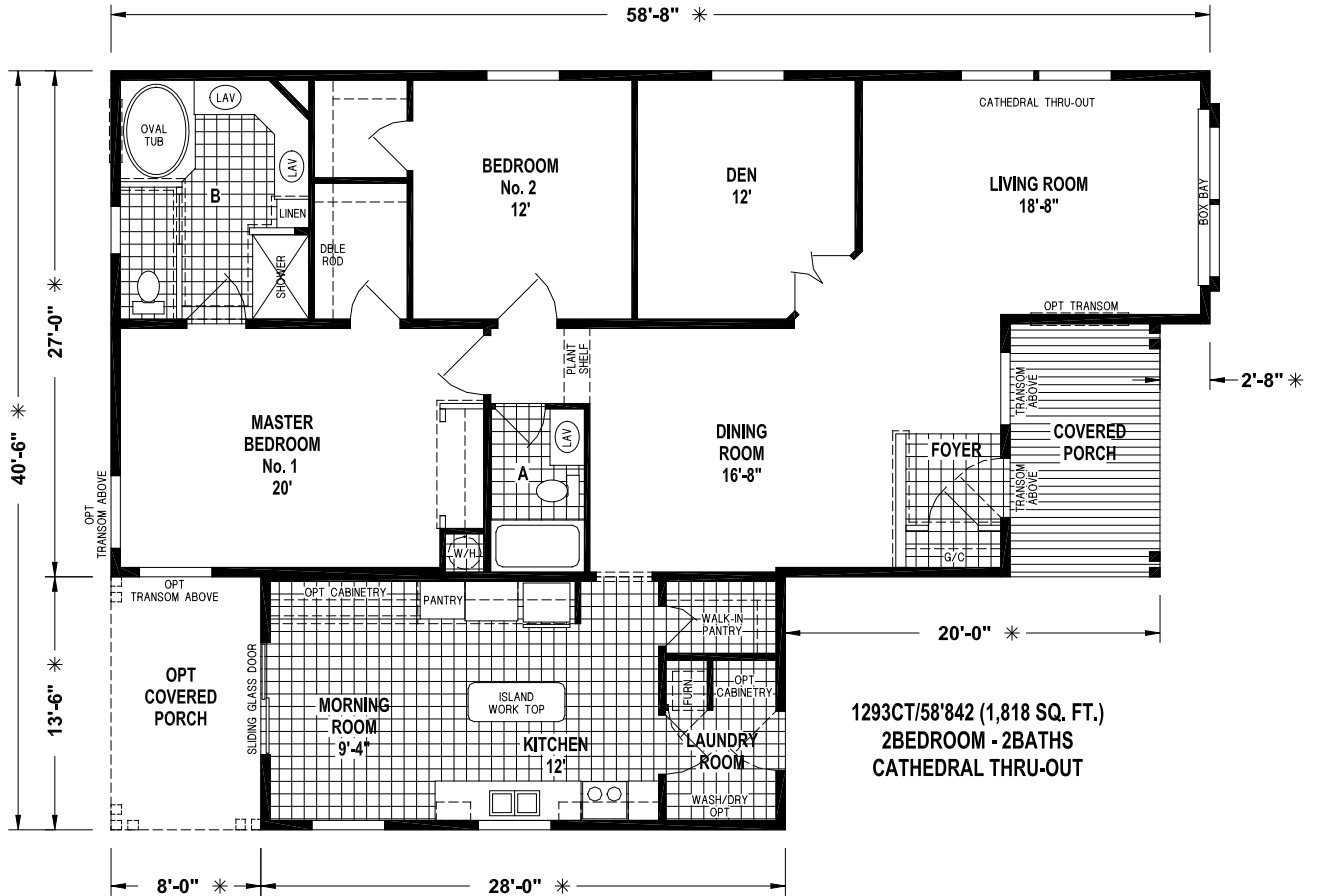
1273CT/4842 (1,881 SQ. FT.) 3BEDROOM - 2BATHS

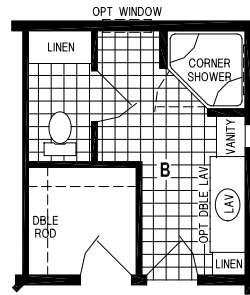


OPTION PORCH

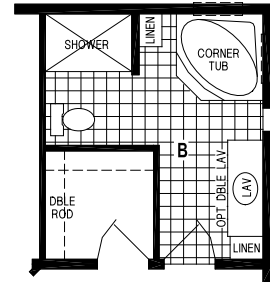




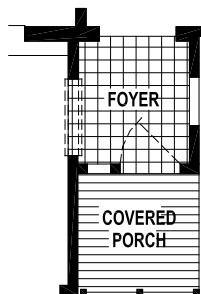
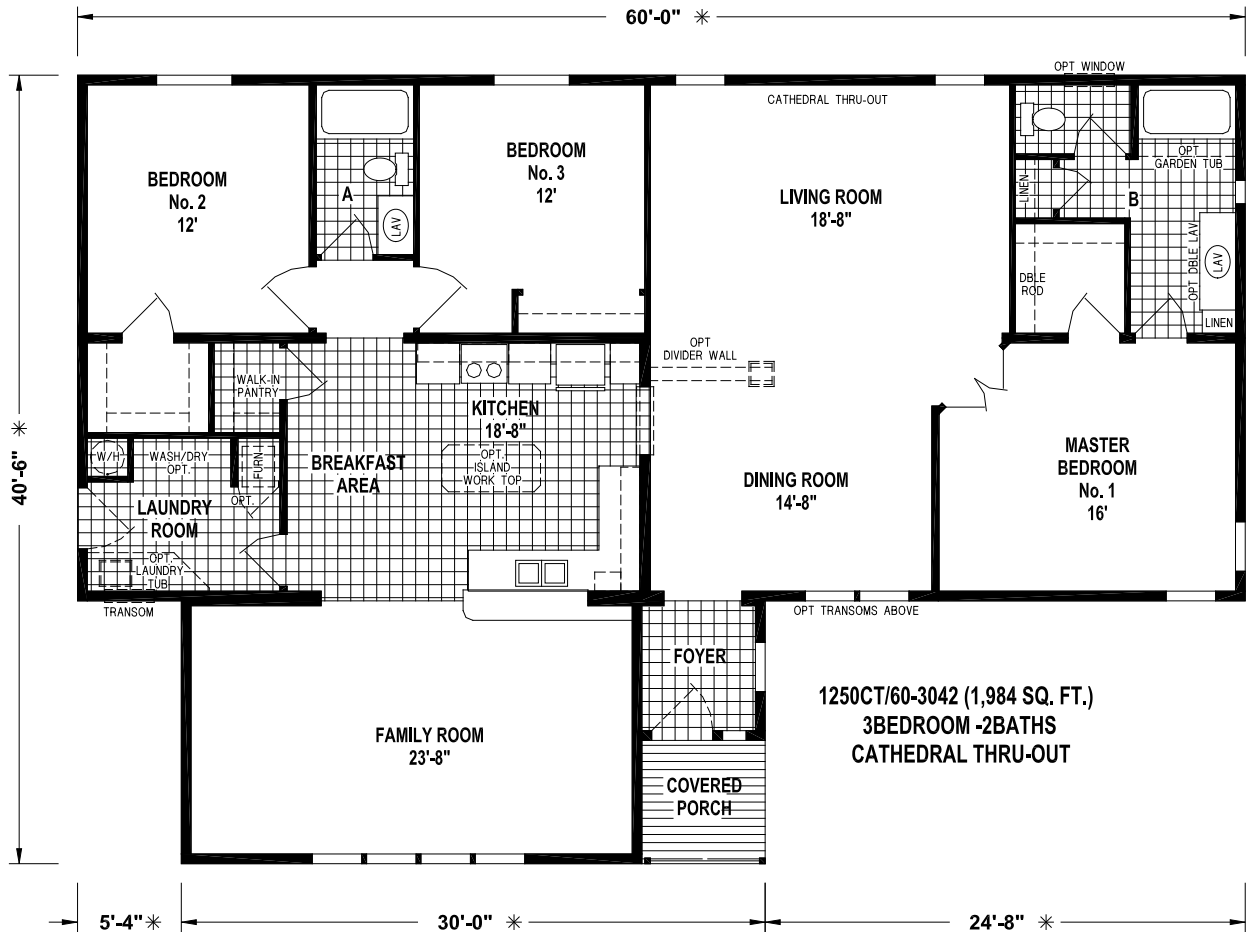




OPTION CORNER SHOWER BATH

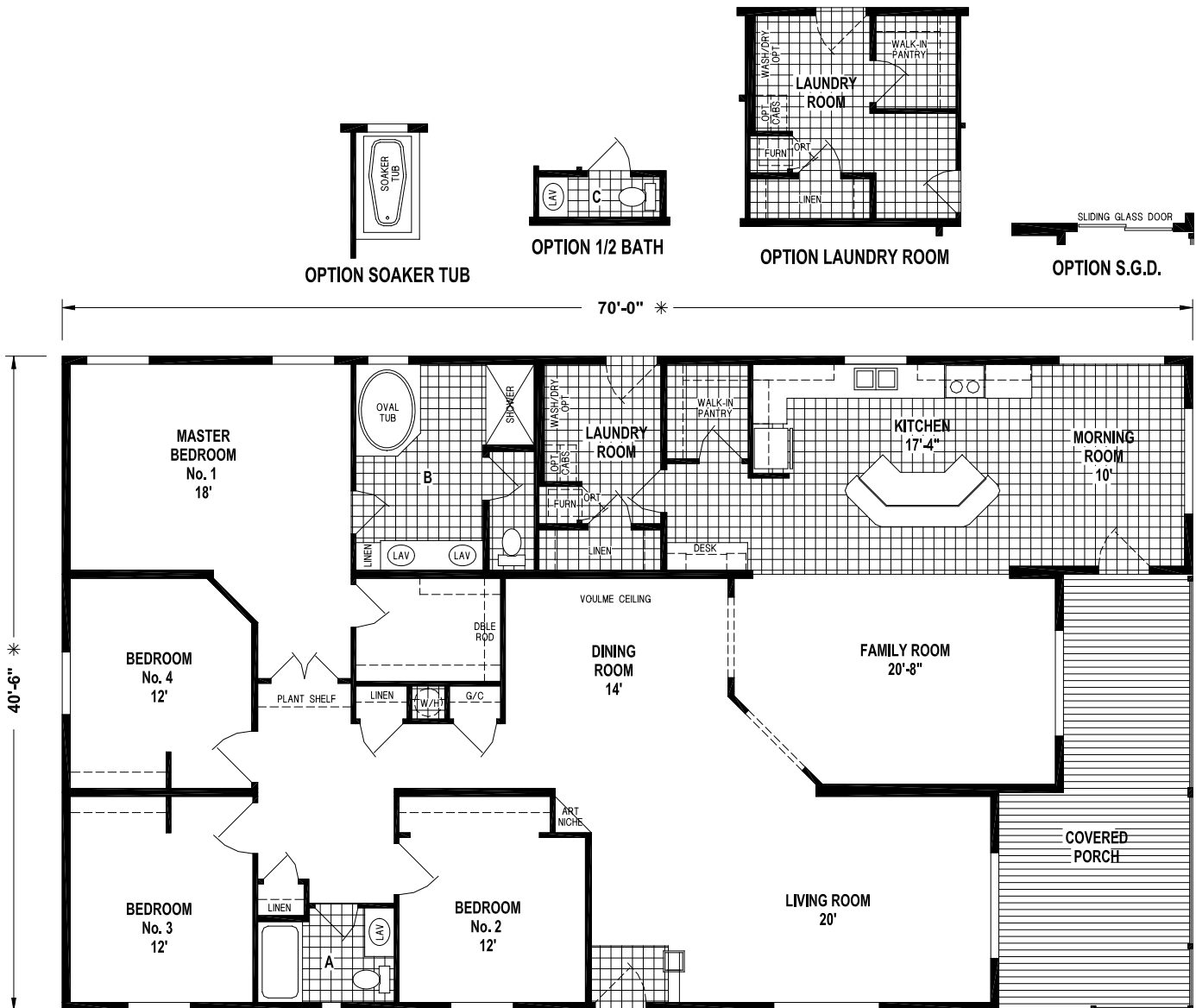


OPTION CORNER TUB BATH

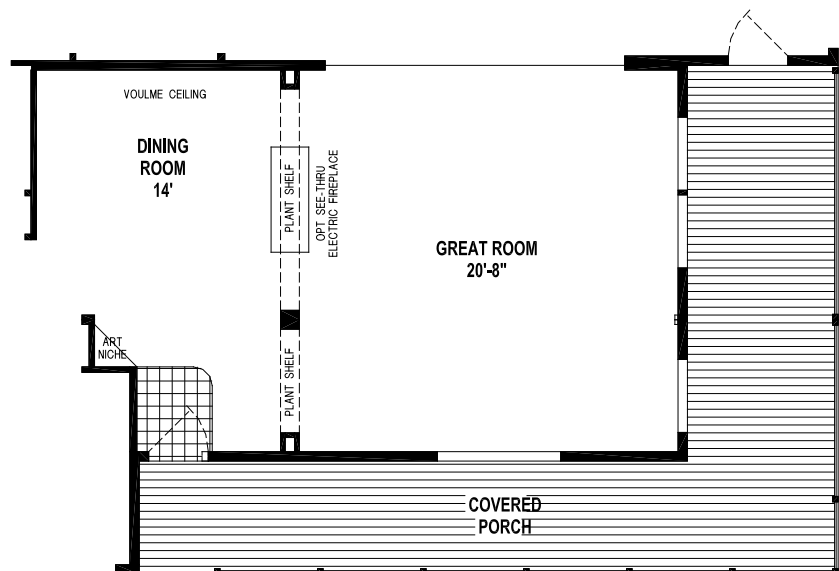


ALT ENTRY

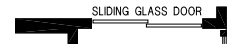
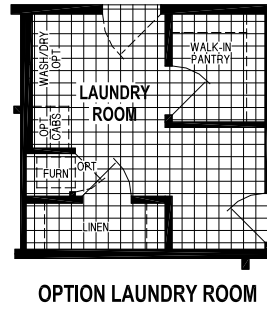
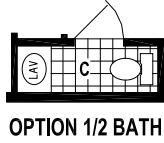
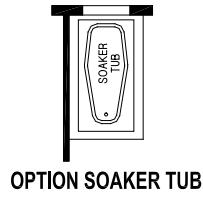




1271CT/7042 (2,565 SQ. FT.) 4BEDROOM - 2BATHS



OPTION GREAT ROOM/PORCH  
(2,444 SQ. FT.)



**15**  
**MONTH**  
**FULL**  
**WARRANTY**

*Not*  
**PARTIAL**

*Not*  
**LIMITED**

**SKYLINE**  
**BRINGING AMERICA HOME. BRINGING AMERICA FUN.**

# West Ridge

## Triple Wide Series

### Standard Features

#### Living Areas

- Carpet
- Dining Light
- Mini-Blinds

#### Kitchen

- Oak Cabinet Doors w/Hardware
- Residential Hidden Cabinet Door Hinges
- Side Roller Drawer Guides
- 25½" Deep Countertops w/24" Deep Base Cabinets
- Lined Overhead Cabinets w/Adjustable Shelves
- Stainless Steel Sink w/Single Lever Faucet & Sprayer
- 18 Cu. Ft. Double Door Frost Free Refrigerator
- 30" Deluxe Electric Range w/Lighted Power Hood
- Pantry w/Drawer Bank per Floor Plan

#### Bathrooms

- Decorative Mirror
- Privacy Locks
- Dual Handle Faucet at Sink
- Single Lever tub/Shower Faucet
- Adjustable Shower Head
- Oak Cabinet Doors w/Hardware
- Residential Hidden Cabinet Door Hinges
- Paper Holder & Towel Bars
- Linen Closet in Master Bath per Plan
- Power Vent Fan
- Lav Drawer Bank Per Floor Plan
- Elongated China Commodes
- Residential Raised Lav Base in Master Bath
- Fiberglass Tub/Shower Combo in Hall Bath
- Linen w/Drawer Bank Per Floor Plan

#### Bedrooms

- Carpet
- Walk-in Closet per Floor Plan
- Ventilated Wire Shelving
- 36" Passage Doors Per Floor Plan
- Mini-Blinds

#### Additional Features

- 25-Year Shingles (Fiberglass—Class A Fire Rated)
- Fiber-Cement Siding
- Cathedral Ceiling Throughout
- 1/2" Tape & Textured Gypsum Walls Throughout
- Residential Baseboard Molding Throughout
- Passage Door Moldings, Prefinished Jambs & Hinges
- Linoleum at Entry
- Electric Furnace
- Graduated Fiberglass Heat Ducts
- Perimeter Heating
- Toe-Kick Registers in Kitchen & Bathrooms
- 40 Gal. Electric Water Heater
- Water Shut-off Valve at Main
- CPVC Waterlines
- Plumb for Washer
- Plumb for Ice Maker
- Wire for Dryer
- Wire for Freezer
- Lever Latch Door Handles
- 36" 6 Fiberglass Steel Front & Rear Door w/Deadbolts
- Insulated Low "E" Vinyl Windows
- Egress Windows in Bedrooms
- 3/4" Floor Decking
- 200 Amp Service Entrance
- 7' - 6" Sidewall Height
- 2 x 6 Sidewalls, 16" O.C.
- 2 x 6 Floor Joists, 16" O.C.
- 30# Roof Load
- Detachable Hitches
- Copper Wiring
- Smoke Detector
- Exterior Receptacle w/GFI Breaker
- Electrical Breaker Box
- Exterior Light at All Exterior Doors
- Code Insulation (R-14 Floor, R-19 Walls & R-25 Ceiling) The Higher the "R-Value" the Greater the Insulating Power

**SKYLINE**<sup>®</sup>  
BRINGING AMERICA HOME. BRINGING AMERICA FUN.

For your comfort and safety, Skyline home designs are approved and inspected for conformance to Federal standards.

\* Dimensions stated to industry standards. Width and length dimensions are nominal and are not to be used for setup of home on site; consult selling retailers for exact specifications. Overall length does not include approximately four foot hitch. The square footage is approximate and based upon nominal exterior floor size. Room sizes are measured from floor ends and wall centers.

Because of progressive product improvement, all prices & specifications are subject to change without prior notice or obligation to Skyline Corporation.

Your Retailer, an independent contractor, who is not an agent of Skyline Corporation, is the party responsible for your purchase contract and any additions, deletions, alterations, or attachments made to or in your home.



**SKYLINE**<sup>®</sup>

BRINGING AMERICA HOME. BRINGING AMERICA FUN.

Visit us at our web site at [www.skylinecorp.com](http://www.skylinecorp.com)